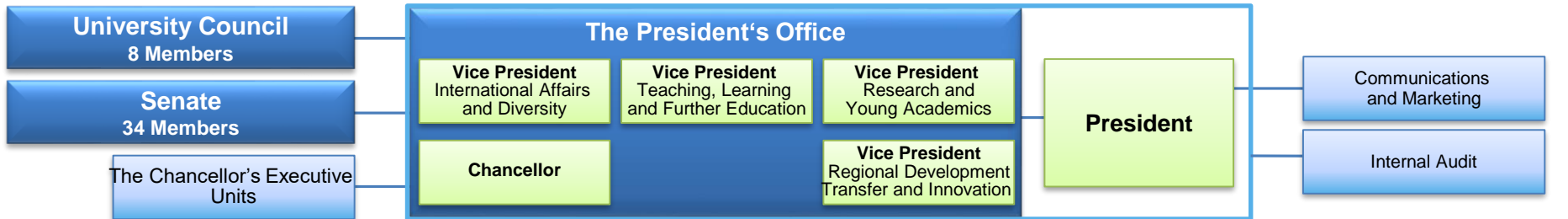


Organisational Chart of the Hochschule Bonn-Rhein-Sieg University of Applied Sciences

as per April 2021



Departments and Research Institutes

Departments	Research Institutes	
Computer Science	Centre for Ethics and Responsibility	
Electrical Engineering, Mechanical Engineering & Technical Journalism	Centre for Entrepreneurship, Innovation and SMEs	
	Centre for Teaching Development and Innovation	
Management Sciences	Graduate Institute	
	Institute for Detection Technologies	
Natural Sciences	Institute for Management	
	Institute for Media Research and Development	
Social Policy und Social Security Studies	Institute for Technology, Resource and Energy-efficient Engineering	
	Institute of Safety and Security Research	
	Institute for Social Innovations	
	Institute of Visual Computing	
	International Centre for Sustainable Development	
	Institute for Functional Gene Analytics (IFGA)	
	b-it (with RWTH Aachen, Bonn University, Fraunhofer)	Institute for IT-Service

Commissions and Commissioners

Commissions	Commissioners
Cooperation	Didactical Training
Equal Opportunities	Digital University
Financial Planning and Budgeting	Diversity
International Affairs	Global Digital Teaching
Quality Improvement	School Liaison Services
Research	Confidentiality
Teaching and Learning	Equal Opportunity
Technology Transfer	Fire prevention
Staff Council	Health and Disability
	Non-discrimination
	Privacy
	Recruitment
	Safety at Work and Environmental Protection

Administration and Central Service Facilities

Administration	Central Service Facilities
Facilities Management, Building and Safety (D1)	Centre for Science and Technology Transfer
Human Resources and Legal Affairs (D2)	International Office
Finance and Purchasing (D3)	Language Centre
Planning, Evaluation and Controlling (D4)	University and District Library
Student Affairs and Student Advice Centre (D5)	

Student Body

Student Parliament (StuPa), General Students' Committee (AStA), Student Councils (& their Executive Committees)